

FX21⁺

LIVESTOCK WEIGHING SYSTEM

MANUAL



 *iconix*

CONTENTS

1.	SYSTEM CARE	3
	Essential Care	3
	Battery Care	3
	Site Preparation	3
2.	OPERATING INSTRUCTIONS	4
	Getting Started	4
	Mode Key	5
	Weigh Key	5
	Delete Key	5
	Draft Key	6
	Group Key	7
	Clearing Records	7
	Statistics	8
	Battery Voltage	8
	Bluetooth Connection	9
	Auto-Drafting Option	9
3.	USER SET-UP	10
4.	SPECIFICATIONS	13
	Standard Loadbar Set 2000 kg	14
	Heavy-Duty Loadbar Set 3500 kg	14



COPYRIGHT: © 2025 Iconix New Zealand Ltd

All rights reserved. No part of this manual may be copied or reproduced in any form or by any means without the prior written consent of Iconix New Zealand Ltd.

The information in this manual may be changed without notice and should not be construed as a commitment by Iconix New Zealand Ltd. Great care has been taken in preparing this manual, however Iconix New Zealand Ltd assumes no responsibility for any technical inaccuracies or typographical errors.

1. SYSTEM CARE

The FX21+ weighing system has been designed to work reliably for long periods of time under adverse conditions. However like any equipment, common sense and care will assist in keeping it in good operating condition.

ESSENTIAL CARE

- ◆ Fit caps to cable ends and indicator sockets when not in use to protect from dirt and moisture. Hang the cable ends up, out of mud and dust.
- ◆ Damage may occur if the capacity of the scale is exceeded.
- ◆ Loadbar cables must be kept in good condition.

BATTERY CARE

**IMPORTANT !
BATTERY LIFE WILL BE CONSIDERABLY SHORTENED
IF IT IS NOT PROPERLY CARED FOR**

- ◆ Always recharge the battery with the *Iconix* AC Adaptor provided for 8 - 12 hours **AFTER USE** with the loadbars disconnected from the indicator.
- ◆ For long term storage, recharge ONCE PER MONTH with the loadbars disconnected.
- ◆ When the battery is low on charge (the BATT. pointer ▲ is on), weighing may continue by connecting the AC Adaptor if mains power is available or by using the battery clip leads to connect to an external 12V battery.
- ◆ The AC Adaptor should not be left plugged into the indicator for long periods of time.

SITE PREPARATION

- ◆ The choice of weighing site is important for accurate weighing and ease of use.
- ◆ A well chosen site that is level will ensure the best conditions for accurate weighing.
- ◆ The loadbars must be bolted to the platform or crate and be firmly attached to the ground or concrete pad.
- ◆ Any rocking or twisting of the platform could result in weighing errors.
- ◆ Adequate clearance around the platform is essential. Any binding or rubbing with posts or gates will produce weighing errors.
- ◆ The race bracket is best mounted on a fence or post and not the crate.
- ◆ Mount the indicator in a well lit position for best readability.
- ◆ A well chosen site will help animals flow smoothly through the system.
- ◆ Mounting the indicator away from the crate will help to keep hands free of the crate when the weigh cycle is started.

2. OPERATING INSTRUCTIONS

GETTING STARTED

- ◆ Connect the two loadbar cables to the loadbar sockets marked on the rear of the indicator.
Use the internal rechargeable battery, or:
Use the *Iconix* AC adaptor, or:
Attach the optional battery cable to the FX21+ and clip onto a 12V DC battery (car, tractor battery etc.). ENSURE CORRECT POLARITY: red clip to +, black clip to –.
The internal battery cannot be recharged from an external battery, however it can be handy for continuing to weigh when the internal battery is flat.
- ◆ Press the **ON** key. The FX21+ initially displays the firmware version number e.g. 'P 5.01'.
- ◆ Then the FX21+ shows the type of loadbars attached:
'S C R L E .1' for standard loadbars or 'S C R L E .3' for heavy-duty loadbars.
- ◆ Next the FX21+ shows the currently selected group (mob file), e.g. 'Gr.0038'. If this is a new weighing session, you will probably want to select a new unused group from the range 1 to 9999. See the *GROUP KEY* section below.
- ◆ The scale will automatically return to zero. When complete, the ZERO pointer ▲ will show that the scale is at zero.
NOTE: If a large load (such as a partly filled wool bale in a wool press) remains on the scale from previous use, the last weight will be displayed. The operator can continue the weighing session from where last finished. Alternatively, press **ZERO** to return the scale to zero.
- ◆ Check that the ZERO pointer ▲ is displayed. Load the animal onto the platform.
If required, enter the ID (tag number) of up to 6 digits using the numeric keypad.
If required, press **CODE/SCORE** once the correct ID is on the display, then enter a code/condition score (0.0 to 999.9). This may also be entered without an ID.
Press **WEIGH**. The animal is accurately weighed and the result locked on the display (in HOLD mode). A new record is added to the currently selected group in memory, consisting of:
ID (Tag Number, if used), Group, Condition Score (if used), Weight
- ◆ Remove the animal from the weighing platform. The last animal's weight remains locked on the display. Check that the ZERO pointer ▲ is displayed between animal weighings. If the ZERO pointer does not appear, hold the next animal back, keep hands etc. clear of the crate and press **ZERO**. The scale will be returned to zero and the weighing session can proceed.
- ◆ At the end of the weighing session, switch the indicator **OFF**.
- ◆ Recharge the internal battery overnight (see BATTERY CARE section above). It is very important for battery life to store the FX21+ with the battery fully charged.

IMPORTANT !

IF THE FX21+ IS DETACHED FROM THE LOADBARS, ENSURE THAT THE WEATHERPROOF CAPS ARE FIRMLY INSTALLED ON ALL CONNECTORS, OTHERWISE WATER DAMAGE TO THE CONNECTORS IS LIKELY.

MODE KEY

The **MODE** key allows the operator to change the weighing mode to FREE mode or one of the types of HOLD mode, as indicated by the HOLD pointer ▲ on the display.

FREE Mode *F R E E*

The display is continuously updated with the weight currently on the scale. If **WEIGH** is used, the averaged weight is briefly displayed and a new record added to memory. FREE mode is suitable for static load weighing, not for weighing animals.

HOLD Mode *H O L d*

Pressing **WEIGH** starts an averaging process, which then displays the accurate weight of the moving animal. A new record is added to memory. The weight is locked on the display until the next key press.

RACE Mode *r R C E*

A version of the standard HOLD mode for weighing cattle in a race, where the weighing result may be affected by the animal leaning against the race. Wait until the animal has been clear of the race for about 1.5 seconds, then press **WEIGH**.

NOTE: When auto-drafting is enabled by the distributor/dealer, two additional modes are available. They are ONLY suitable for use with special crates that restrict animal movement, allowing faster weighing:

SPEED Mode *S P E E d*

A fast version of the standard HOLD mode with a 1.3 second weigh time.

HIGH SPEED Mode *H . S P E E d*

The fastest version of the standard HOLD mode with a 0.7 second weigh time.

WEIGH KEY

To weigh an animal on the scale, press **WEIGH**. The animal is accurately weighed and the result locked on the display (in HOLD mode). A new weight record is added to memory. For a complete description of the weighing process, see the *GETTING STARTED* section above.

DUPLICATE ID (Tag Number)

If an ID number is repeated, when **WEIGH** is pressed, '*d U P L*' is alternately displayed with the ID.

If the number is correct, press **WEIGH** again to continue (noting that the *previous* use of that number is probably incorrect).

If incorrect, use **DELETE** one or more times, then re-enter.

Zero is not considered to be a valid ID, so repeated use is permitted.

The FX21+ is factory set with this feature enabled. See the *USER SET-UP* section for details on disabling.

DELETE KEY

The **DELETE** key has 3 functions:

- ◆ If there has been a problem with the weighing, press **DELETE** to delete the last weighing record from memory. '*d E L E t E*' is displayed as confirmation. It is only possible to delete the last weighing immediately after the animal has been weighed. '*n o n E*' is displayed if deletion is not possible.
- ◆ When using the numeric keypad for entering IDs (tag numbers), Group or Condition Score, use **DELETE** to remove the last entered digit (repeated use of **DELETE** is permitted).
- ◆ Clearing records (see the *CLEARING RECORDS* section below).

DRAFT KEY

DRAFTING

Draft limits may be set for sorting of animals into weight ranges. Both 2-way and 3-way drafting are possible.

NO DRAFTING

Set draft limits Draft 1 and Draft 2 to '0.0'

2 WAY DRAFTING

Set one draft limit to the required weight and set the other to '0.0'

The display will show 'H' (high) or 'L' (low) alongside the weight.

3 WAY DRAFTING

Set the draft limits to the required weights.

The display will show 'H' (high), 'C' (centre) or 'L' (low) alongside the weight.

MINIMUM & MAXIMUM WEIGHT

Minimum and maximum weights can be set. When **WEIGH** is pressed, a new record is stored in memory, unless the weight is below the minimum weight or above the maximum weight. If the weight is outside the allowed range, then 'Under' or 'Over' is flashed alternately with the weight.

The operator can then choose to press:

DELETE do not record this weighing. 'no.Stor' is displayed as confirmation.

or **WEIGH** record this weighing, even though it is outside the normal range. 'SAVED' is displayed.

SETTING DRAFT LIMITS, MINIMUM WEIGHT & MAXIMUM WEIGHT

Press **DRAFT** for 'drFt.1'.

Then enter the draft weight limit, using the numeric keypad.

Press **DRAFT** again for 'drFt.2'.

Then enter the draft weight limit, using the numeric keypad.

Press **DRAFT** again for 'Under'.

Then enter the minimum weight that can be stored in a record, using the numeric keypad.

Press **DRAFT** again for 'Over'.

Then enter the maximum weight that can be stored in a record, using the numeric keypad.

Press **DRAFT** again to return to the weighing mode.

NOTE: When auto-drafting is enabled by the distributor/dealer and then selected in User Set-Up, there are additional settings available. See the *AUTO-DRAFTING OPTION* section below.

GROUP KEY

A new record is stored in memory in the selected group (mob file) whenever **WEIGH** is pressed. A record consists of:

ID (Tag Number, if used), Group, Condition Score (if used) and Weight.

In normal operation, before starting a new weighing session, a previously unused group is selected from the range 1 – 9999. At the end of the session, or at any time during, the statistics for the group may be displayed.

MEMORY CAPACITY: 95,123 records

The memory capacity may be shared between the groups in any manner. i.e. any number of groups may be used with any number of records in each, providing the total number of records does not exceed 95,123. See the *USING "ALL GROUPS"* section below for how to check the total number of records that have been used.

When the record limit is reached, for a further press of **WEIGH** the message '**FULL**' will be displayed. No more records are able to be stored until some or all of the existing records are cleared. Usually records from a previous weighing session (stored in another group) can be cleared so that more records can be added to the currently selected group.

DISPLAYING AND SELECTING A GROUP

Press **GROUP** to display the selected group, for example '**Gr.1234**' where Group 1234 is selected.

To continue putting records into this group, press **GROUP** again to return to the normal operating mode.

If a different group is required for the new weighing session, type the new group number from the range 1 to 9999, for example '**329**', to display '**Gr.0329**'.

To accept the new setting and return to the normal operating mode, press **GROUP**.

To see whether the selected group already has records in it, check the statistics for the group using ***** then ***WGT STATS**. See the *STATISTICS* section below.

USING Group 0 (All Groups)

Selecting '**Gr.0000**' allows access to all records in memory, regardless of which groups individual records are stored in. The user may:

- ◆ View global statistics. See the *STATISTICS* section below. Average weight, total weight and the number of weighings etc. are the totals for all records in memory.

Note: The total number of weighings will show whether the memory capacity of the FX21+ will soon be reached (95,123 records).

- ◆ Delete all records in memory. See the *CLEARING RECORDS* section below.

Note: '**Gr.0000**' may not be used for storing records in a weighing session. If an attempt is made to do so, the message '**no.5 error**' is displayed briefly.

CLEARING RECORDS

To clear all records in the currently selected group:

- ◆ Ensure that the correct group for deletion is selected, by pressing **GROUP**.
- ◆ Display any statistics function (see the *STATISTICS* section below), then while any of the statistics are flashing on the display, press **DELETE**.
- ◆ The operator is then prompted with the message '**SURE?**'.
- ◆ Press **DELETE** again within 2 seconds to confirm. '**delete**' is displayed if the file has been cleared. If **DELETE** is not pressed within 2 seconds, '**no del**' is displayed.
- ◆ When using Group 0 to delete all records in all groups, there is an extra step. '**del.all**' is displayed briefly, followed by '**SURE?**'. **DELETE** must be pressed again to confirm.

STATISTICS

Statistics apply to all records in the currently selected group. In the case of Group 0, statistics apply to all records in memory, regardless of which groups they are located in.

DISPLAYING STATISTICS

Press ***** to display 'SELECt'.

Press the corresponding number key to select from:

***WGT STATS**, ***DFT NO'S**, ***DFT WGTS**, ***DFT TOTS** or ***AVG CODE**

While the statistics are calculated, 'BUSY -' is displayed briefly.

For example:

Press ***WGT STATS**: n.00123 number of animals weighed

Press ***WGT STATS** again: A 46.7 average weight

Press ***WGT STATS** again: tot ↔ 5747 total weight

Press ***WGT STATS** again to return to the normal weighing mode ('End' is displayed) OR press any other statistics key (e.g. ***DFT NO'S**) to begin displaying a different set of statistics:

*DFT NO's:	H.00023	number in High Group
	C.00080	number in Centre Group
	L.00020	number in Low Group
*DFT WGTS:	H 59.0	average weight of High Group
	C 45.0	average weight of Centre Group
	L 39.5	average weight of Low Group
*DFT TOTS:	tot.H ↔ 1357	total weight of High Group
	tot.C ↔ 3600	total weight of Centre Group
	tot.L ↔ 790	total weight of Low Group
*AVG CODE:	cd 5.6	average code or condition score

QUICK EXIT

Whenever statistics are flashing, you may press ***** for a quick exit back to the weighing mode. 'End' is displayed.

"WHAT IF" DRAFTING STATISTICS

Since statistics are recalculated on entry, you may change the draft limits and re-examine the drafting statistics to determine how many animals would have been drafted into each weight range with different settings.

BATTERY VOLTAGE

To display the battery voltage:

Press ***** to display 'SELECt', then press ***BATTERY**.

The battery voltage is shown, for example '12.4 U' for 12.4 volts. The normal operating range should be from 12.0 to 12.8V. Below 12.0V, the battery will soon need to be recharged.

Charging the battery will be faster if the FX21+ is switched off. However you may check that the charger is working correctly by switching the indicator on and checking the voltage. While charging 'CHARGE' will be shown instead of the voltage.

BLUETOOTH CONNECTION

You may check whether the FX21+ Bluetooth is currently connected to another Bluetooth device.

Press ***** to display 'SELECt', then press ***BT** to show the connection status:

C o n n . O n	if connected
C o n n . O F	if not connected
b L U E . O F	if Bluetooth is not enabled or turned off

AUTO-DRAFTING OPTION

The auto-drafting feature allows the FX21+ to be used with the Racewell sheep crate / drafting system fitted with the *Iconix* Auto-Draft Controller. When auto-drafting is enabled by the distributor/dealer and then selected in User Set-Up, two additional drafting settings are available when **DRAFT** is pressed.

DRAFTING GATE DIRECTION (access using **DRAFT**)

H C L	High weights=left	Centre weights=centre	Low weights=right
H L C			
C H L			
C L H			
L H C			
L C H	Low weights=left	Centre weights=centre	High weights=right

To change the direction setting, press **ZERO (+)**.

To save this setting and step on to the next one, press **DRAFT (→)**.

The High, Centre and Low weight animals may be drafted left, right or straight through, in the case of 3-way drafting. For 2-way drafting, set one of the draft limits to zero and select the direction for the High and Low weight animals (ignore the Centre weight direction).

AUTO WEIGH ON/OFF (access using **DRAFT**)

To change the auto-weigh setting, press **ZERO (+)**.

To save this setting and step on to the next one, press **DRAFT (→)**.

To automate the weighing and recording of an animal whenever the HOLD switch on the Racewell crate is operated, select the 'A U t O' weigh mode. A signal from the crate activates the weigh function, eliminating the need to press **WEIGH** on the FX21+. This is particularly suited to the fast drafting of sheep.

Where it is desired to enter tag numbers and/or condition scores, manual operation of **WEIGH** should be selected. For manual operation, select 'A U t O . O F'.

FAST AUTO-DRAFTING

When auto-drafting is selected, SPEED and HIGH SPEED weighing modes may be selected for use with special crates that restrict animal movement. See the *MODE KEY* section above.

MANUAL OVERRIDE OF AUTO-DRAFTING

When auto-drafting is in progress, it is possible to override the drafting direction selected by the FX21+, using the **0** key on the numeric keypad (remember **0** for **O**verride).

Press **0** to select the 'C E n t r E' direction.

Press **0** again to select the 'r I G H t' direction.

Press **0** again to select the 'L E F t' direction.

At any time during manual override, press any key other than **0** to exit manual override and return to the weighing mode.

3. USER SET-UP

NOTE:

Most FX21+ settings apply only to the currently connected scale e.g. standard loadbars on Scale 1. Changing these settings has no effect on the other two scales.

Some settings apply to all possible scales (1: standard loadbars, 2: vet or other scale base, 3: heavy-duty loadbars). Changing these settings on one scale, will change the other two scales.

To enter User Set-Up, press **SETUP**.

The user settings are as follows:

1. BLUETOOTH (all scales, if enabled)

`BLUE.OFF` Off (default)
`BLUE.ON` On

If the Bluetooth module has been enabled by the distributor/dealer, Bluetooth may be switched on or off. If is not going to be used, it should be switched OFF.

To change the Bluetooth setting, press **ZERO (+)**.

To save this setting and step on to the next one, press **DRAFT (→)**.

To save this setting and exit Set-Up, press **SETUP**.

2. BLUETOOTH MODE

`bt.Std` Standard (default)
`bt.Cont` Continuous
`bt.EID` EID reader

If the Bluetooth module has been enabled by the distributor/dealer, Standard, Continuous or EID mode may be selected.

The standard setting is "on-demand" output, where the weight string is transmitted after a press of **WEIGH** or in response to receiving the 'Q' or 'L' control codes (providing Bluetooth is switched ON).

"Continuous" output mode may be selected. The weight string is transmitted every time the weight on the FX21+ display is updated. DO NOT select this mode unless you have a good reason for doing so, such as continuously transmitting to a remote display.

EID mode may be selected, for use with a compatible Bluetooth equipped reader.

To change the Bluetooth Mode setting, press **ZERO (+)**.

To save this setting and step on to the next one, press **DRAFT (→)**.

To save this setting and step back to the previous one, press **GROUP (←)**.

To save this setting and exit Set-Up, press **SETUP**.

3. EID MODE

`EID.OFF` Off (default)
`EID.GI` Gallagher HR5 reader
`EID.tl` not currently used
`EID.RI` Agrident AWR300 etc.

When Bluetooth Mode has been selected as EID, the EID reader type may be selected.

Please contact Iconix for further information on connecting to Gallagher HR5 and Agrident/Aliflex AWR300 readers.

To change the EID mode setting, press **ZERO (+)**.

To save this setting and step on to the next one, press **DRAFT (→)**.

To save this setting and step back to the previous one, press **GROUP (←)**.

To save this setting and exit Set-Up, press **SETUP**.

4. RS232 (all scales, if enabled)

232.OFF Off (default)

232.ON On

RS232 is a legacy serial communications protocol. If it has been factory installed as an option and enabled by the distributor/dealer, RS232 may be switched on or off. Unless it is specifically required, ensure that it remains OFF.

To change the RS232 setting, press **ZERO (+)**.

To save this setting and step on to the next one, press **DRAFT (→)**.

To save this setting and step back to the previous one, press **GROUP (←)**.

To save this setting and exit Set-Up, press **SETUP**.

5. AUTO-DRAFT (if enabled)

drft.OF Off (default)

drft.ON for normal speed

drft.HS for high speed

The auto-draft setting is only available if Auto-drafting has been enabled by the distributor/dealer. Auto-drafting is for use with Racewell automatic sheep drafting systems. For new model Racewell crates (these have 4 infrared “eyes” fitted), you may select the high speed auto-draft mode. The high speed mode should NOT be used for older model Racewell crates.

Unless auto-drafting is specifically required, ensure that it is switched off.

When auto-drafting is enabled, additional drafting functions are available via the FX21+ keyboard.

To change the Auto-Draft setting, press **ZERO (+)**.

To save this setting and step on to the next one, press **DRAFT (→)**.

To save this setting and step back to the previous one, press **GROUP (←)**.

To save this setting and exit Set-Up, press **SETUP**.

6. DUPLICATE ID NUMBER CHECKING

dupl.ON On (default)

dupl.OF Off

When Duplicate Checking is enabled, after entering an ID number, when **WEIGH** is pressed all records in the selected Group are checked for previous use of the same (non-zero) tag number.

To change the Duplicate ID Checking setting, press **ZERO (+)**.

To save this setting and step on to the next one, press **DRAFT (→)**.

To save this setting and step back to the previous one, press **GROUP (←)**.

To save this setting and exit Set-Up, press **SETUP**.

7. ZERO-TRACKING

zer0.ON On (default)

zer0.OF Off

Zero-tracking automatically restores the scale to zero, by “tracking out” small amounts of dung and dirt left on the scale. It should be ON for most weighing applications.

To change the Zero-Tracking setting, press **ZERO (+)**.

To save this setting and step on to the next one, press **DRAFT (→)**.

To save this setting and step back to the previous one, press **GROUP (←)**.

To save this setting and exit Set-Up, press **SETUP**.

8. DISPLAY RELEASE

REL5.OFF Off (default)

REL5.ON On

The standard factory setting is Display Release OFF, which in HOLD mode keeps the last weighing locked on the display, until the next weighing.

For Display Release ON, when the weighed animal is removed from the scale, the weight will not remain locked on the display.

To change the Display Release setting, press **ZERO (+)**.

To save this setting and exit Set-Up, press **DRAFT (→)**.

To save this setting and step back to the previous one, press **GROUP (←)**.

On exit from Set-Up, '**SAVED**' is displayed while the settings are being stored. The indicator then returns to the normal weighing mode.

4. SPECIFICATIONS

FX21+ Version 6.01 onwards ('P 5 . 0 1' is shown at switch-on), 2025 onwards

Supply Voltage: Nominal 12V DC
Maximum 19V DC
Reverse polarity protection diode fitted.

Low Battery Indication: Below approximately 11.6V the LOW BAT pointer ▲ will be on.
The FX21+ switches off at approximately 10V.

Supply Current: Approximately 150 mA including loadbar set.

Temperature Range: -5°C to +50°C

Switch-On Zero: At switch-on the scale will automatically return to zero, unless the weight on the scale exceeds 1% of capacity (22 kg for 2000 kg loadbar set).

Zero Tracking: Small residual weights left on the scale between weighings (dirt build up) are automatically 'zero-tracked' out and the scale returned to zero. As this occurs the ZERO pointer ▲ will indicate that ZERO has been reached.

The zero-tracking amount is set to 0.5% of the weight displayed after the last press of **WEIGH** (2.2 kg maximum).

Prior to the first press of **WEIGH**, the zero-tracking amount defaults to 0.015% of capacity (0.3 kg for 2000 kg loadbar set).

Resolution: Autoranges in graduated steps from the zero point of the scale.

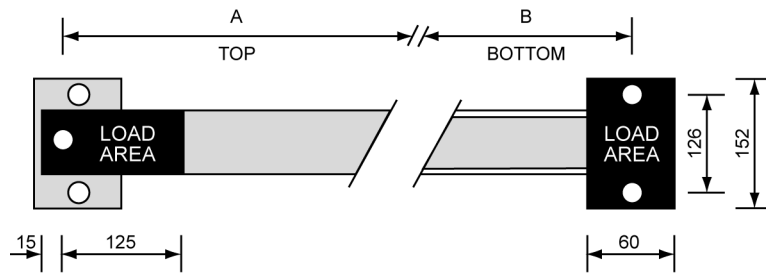
Scale 1:				
Standard Loadbars	Metric Model	Resolution	Imperial Model	Resolution
	0 - 20 kg	0.1 kg	0 - 40 lb	0.2 lb
	20 - 50 kg	0.2 kg	40 - 100 lb	0.5 lb
	50 - 200 kg	0.5 kg	100 - 400 lb	1 lb
	200 - 500 kg	1 kg	400 - 1000 lb	2 lb
	500 - 2000 kg	2 kg	1000 - 4000 lb	5 lb
Minimum Capacity:	20 kg (the 0-20 kg range is available but is not part of the EMC specification)			
Scale 2:				
Vet Scale	0 - 100 kg	0.05 kg	0 - 200 lb	0.1 lb
	100 - 300 kg	0.1 kg	200 - 600 lb	0.2 lb
Scale 3:				
Heavy-Duty Loadbars	0 - 100 kg	0.5 kg	0 - 200 lb	1 lb
	100 - 200 kg	1 kg	200 - 400 lb	2 lb
	200 - 1000 kg	2 kg	400 - 2000 lb	5 lb
	1000 - 3500 kg	5 kg	2000 - 7000 lb	10 lb

Accuracy: $\pm 0.5\%$ of Displayed Reading ± 1 Division
(where 1 division is 0.1 kg, 0.5 kg etc. depending on weight range)

RF Immunity: Maximum additional error in a 3V/m RF field in the range 27 - 500 MHz is:
 ± 2 divisions for 20 - 50 kg
 ± 1 division for 50 - 200 kg
 ± 0 division for 200 - 2000 kg

EMC Approvals: Meets or exceeds the following standards:
IEC801-2 Electrostatic discharge
EM50081-1 Free radiation measurements
EM50082-1 RF immunity

STANDARD LOADBAR SET 2000 kg



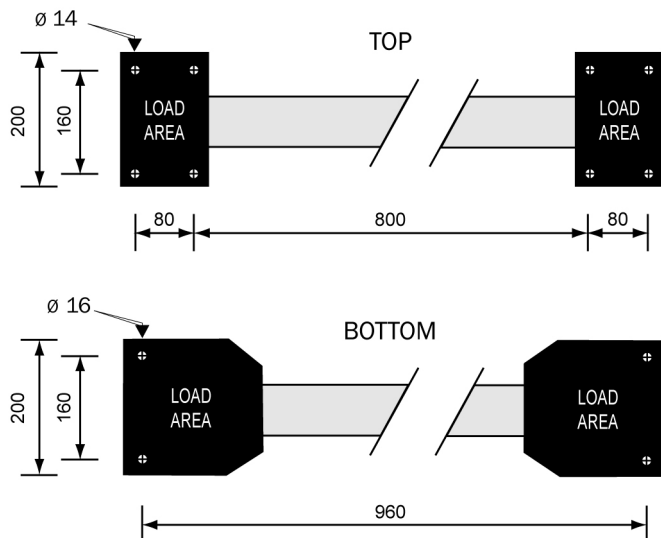
600mm

A: 570
B: 546
Length: 600
Width: 152
Height: 95
Capacity: 2000kg

1000mm

A: 970
B: 946
Length: 1000
Width: 152
Height: 95
Capacity: 2000kg

HEAVY-DUTY LOADBAR SET 3500 kg



Length: 1000 Width: 200 Height: 115
Capacity: 3500kg



23 Matipo Street, Palmerston North, New Zealand
www.iconix.co.nz

Ph 64-6-3501528