



## LIVESTOCK WEIGHING SYSTEM

# MANUAL





# CONTENTS

<b>1. SYSTEM CARE</b> .....	<b>3</b>
<i>Essential Care</i> .....	3
<i>Site Preparation</i> .....	3
<b>2. OPERATING INSTRUCTIONS</b> .....	<b>4</b>
<i>Getting Started</i> .....	4
<i>Weigh Key</i> .....	5
<i>Delete Key</i> .....	5
<i>Stats Key</i> .....	5
<i>Clearing Statistics</i> .....	5
<i>Battery Voltage</i> .....	5
<b>3. SET-UP KEY</b> .....	<b>6</b>
<b>4. SPECIFICATIONS</b> .....	<b>7</b>
<i>Steel Loadbar Set 2000kg</i> .....	8
<i>Heavy-Duty Loadbar Set 3500kg</i> .....	8



**COPYRIGHT: © 2024 Iconix New Zealand Ltd**

All rights reserved. No part of this manual may be copied or reproduced in any form or by any means without the prior written consent of Iconix New Zealand Ltd.

The information in this manual may be changed without notice and should not be construed as a commitment by Iconix New Zealand Ltd. Great care has been taken in preparing this manual, however Iconix New Zealand Ltd assumes no responsibility for any technical inaccuracies or typographical errors.

# 1. SYSTEM CARE

The FX1+ weighing system has been designed to work reliably for long periods of time under adverse conditions. However like any equipment, common sense and care will assist in keeping it in good operating condition.

## ESSENTIAL CARE

- ◆ Fit caps to cable ends and indicator sockets when not in use to protect from dirt and moisture. Hang the cable ends up, out of mud and dust.
- ◆ Damage may occur if the capacity of the scale is exceeded.
- ◆ Loadbar cables must be kept in good condition.

## SITE PREPARATION

- ◆ The choice of weighing site is important for accurate weighing and ease of use.
- ◆ A well chosen site that is level will ensure the best conditions for accurate weighing.
- ◆ The loadbars must be bolted to the platform or crate and be firmly attached to the ground or concrete pad.
- ◆ Any rocking or twisting of the platform could result in weighing errors.
- ◆ Adequate clearance around the platform is essential. Any binding or rubbing with posts or gates will produce weighing errors.
- ◆ The race bracket is best mounted on a fence or post and not the crate.
- ◆ Mount the indicator in a well lit position for best readability.
- ◆ A well chosen site will help animals flow smoothly through the system.
- ◆ Mounting the indicator away from the crate will help to keep hands free of the crate when the weigh cycle is started.

## 2. OPERATING INSTRUCTIONS

### GETTING STARTED

- ◆ Connect the two loadbar cables to the loadbar sockets marked on the rear of the indicator.  
Either: Use the *Iconix* AC adaptor  
or: Attach the battery cable to the FX1+ and clip onto a 12V DC battery (car, tractor battery etc.). ENSURE CORRECT POLARITY: red clip to +, black clip to –.
- ◆ Press the **ON** key. The FX1+ initially displays the firmware version number e.g. 'P 3.07'.  
Then the FX1+ shows the type of loadbars attached:  
'S C R L . 1' for standard loadbars or 'S C R L . 3' for heavy-duty loadbars.
- ◆ The scale will automatically return to zero. When complete, the ZERO pointer ▲ will show that the scale is at zero.  
**NOTE:** If a large load (such as a partly filled wool bale in a wool press) remains on the scale from previous use, the last weight will be displayed. The operator can continue the weighing session from where last finished. Alternatively, press **ZERO** to return the scale to zero.
- ◆ If this is a new weighing session, the operator will probably want to start with cleared statistics, if Statistics are enabled in Set-Up (see *STATS KEY* section below).
- ◆ Check that the ZERO pointer ▲ is displayed. Load the animal onto the platform.  
Press **WEIGH** – press + in the centre of the cursor button.



The animal is accurately weighed and the result locked on the display (in HOLD mode). Statistics are updated, if enabled in Set-Up.

- ◆ Remove the animal from the weighing platform. The last animal's weight remains locked on the display. Check that the ZERO pointer ▲ is displayed between animal weighings. If the ZERO pointer does not appear, hold the next animal back, keep hands etc. clear of the crate and press **ZERO**. The scale will be returned to zero and the weighing session can proceed.
- ◆ When weighing is finished, switch the indicator **OFF**.

**IF THE FX1+ IS DETACHED FROM THE LOADBARS, ENSURE THAT THE WEATHERPROOF CAPS ARE FIRMLY INSTALLED ON ALL CONNECTORS**

## WEIGH KEY

To weigh an animal on the scale, press **WEIGH** – press **+** in the centre of the cursor button.

The animal is accurately weighed and the result locked on the display (in HOLD mode). Statistics are updated (if enabled in Set-Up). For a complete description of the weighing process, see the GETTING STARTED section above.



## DELETE KEY

If there has been a problem with the weighing, press **DELETE** to delete the last weighing from the statistics (if enabled). 'd E L E T' is displayed as confirmation. It is only possible to delete the last weighing immediately after the animal has been weighed. 'n o n E' is displayed if deletion is not possible.

## STATS KEY

Basic statistics are available, if enabled in Set-Up. Normally statistics would be cleared at the start of a new weighing session. Alternatively, new weighings may be added to a previous weighing session.

Scroll through the statistics with the **STATS** key. Flashing digits indicate that statistics are being displayed. They are displayed in the following order:

n o . - number of animals weighed  
A U G - average weight

A final press of **STATS** returns the scale to the weighing mode.

Rather than scrolling through all statistics, you may exit at any point by pressing **WEIGH**.

## CLEARING STATISTICS

All statistics are cleared by pressing **DELETE** while any of the statistics are flashing on the display. The operator is then prompted with the message 'd E L . P'. Press **DELETE** again within 2 seconds to confirm. 'd E L E T' is displayed if statistics have been cleared.

## BATTERY VOLTAGE

To display the voltage of the external battery, hold down **STATS** for 2 seconds until the voltage is shown, for example '12.4 U' for 12.4 volts. The normal operating range should be from 12.0 to 12.8V. Below 12.0V, the battery will soon need to be recharged.

## 3. SET-UP KEY

### NOTE:

Most FX1+ settings apply only to the currently connected scale e.g. standard loadbars on Scale 1. Changing these settings has no effect on the other two scales.

Some settings apply to all possible scales (1: standard loadbars, 2: vet or other scale base, 3: heavy-duty loadbars). Changing these settings on one scale, will change the other two scales.

### USING THE CURSOR BUTTON:

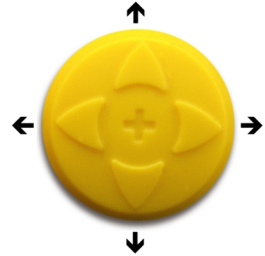
Changing the setting and stepping between settings is done with the cursor button:

To change the currently displayed setting, press **↑** or **↓**.

To save the setting and step on to the next one, press **→**.

To save the setting and step back to the previous one, press **←**.

To save the setting and exit Set-Up, press **SETUP**.



The user settings are as follows:

### 1. MODE

<i>H O L D</i>	Hold mode (default)
<i>r A C E</i>	In-Race mode
<i>S P E E D</i>	Speed mode
<i>F r E E</i>	Free mode

The operator can choose between FREE mode and three variations on HOLD mode, as indicated by the HOLD pointer ▲ on the display when in normal operation.

**HOLD Mode:** pressing **WEIGH** starts an averaging process, which then displays the accurate weight of the moving animal. Each weight is added to the statistics and locked on the display until the next key press.

**RACE Mode:** a version of the standard HOLD mode for weighing cattle in a race, where the weighing result may be affected by the animal leaning against the race. Wait until the animal has been clear of the race for about 1.5 seconds, then press **WEIGH**.

**SPEED Mode:** a fast version of the standard HOLD mode with a 1.3 second weigh time. Only for use with special crates that restrict animal movement, allowing faster weighing.

**FREE Mode:** the display is continuously updated with the weight currently on the scale. If **WEIGH** is used, the averaged weight is briefly displayed and added to the statistics. FREE mode is suitable for static load weighing, not for weighing animals.

### 2. STATISTICS

<i>S T A T . 0</i>	Off (default)
<i>S T A T . 1</i>	On

The standard factory setting is Statistics OFF. With Statistics ON, for every press of the **WEIGH** key, the new weighing is added to a running total of the number of animals weighed and their average weight. See *STATS KEY* in Section 2 above.

### 3. ZERO-TRACKING

<i>Z E R O . 1</i>	On (default)
<i>Z E R O . 0</i>	Off

Zero-tracking automatically restores the scale to zero, by “tracking out” small amounts of dung and dirt left on the scale. It should be ON for most weighing applications.

### 4. DISPLAY RELEASE

<i>r E L S . 0</i>	Off (default)
<i>r E L S . 1</i>	On

The standard factory setting is Display Release OFF, which in HOLD mode keeps the last weighing locked on the display, until the next weighing. With Display Release ON, when the weighed animal is removed from the scale, the weight will not remain locked on the display.

On exit from Set-Up, 'S R U E d' is displayed while the settings are being stored. The FX1+ then returns to the normal weighing mode.



## 4. SPECIFICATIONS

FX1+ Version 3.03 onwards ( P 3 . 0 3 is shown at switch-on), 2021 onwards.

**Supply Voltage:** Nominal .... 12V DC  
Maximum .... 19V DC  
Reverse polarity protection diode fitted.

**Low Battery Indication:** Below approximately 11.6V the LOW BAT pointer ▲ will be on.  
The FX1+ switches off at approximately 10V.

**Supply Current:** Approximately 150 mA including loadbar set.

**Temperature Range:** -5°C to +50°C

**Zero Tracking:** Small residual weights left on the scale between weighings (dirt build up) are automatically 'zero-tracked' out and the scale restored to zero. As this occurs the ZERO pointer ▲ will indicate that ZERO has been reached.

The zero-tracking amount is set to 0.5% of the weight displayed after the last press of **WEIGH**, with a 2.2kg maximum.

At switch-on the zero-tracking amount is initialised to 0.015% of capacity (0.3kg for 2000kg loadbar set).

**Resolution:** Autoranges in graduated steps from the zero point of the scale.

### Scale 1:

Standard Loadbars	Metric Model	Resolution	Imperial Model	Resolution
	0 - 20 kg	0.1 kg	0 - 40 lb	0.2 lb
	20 - 50 kg	0.2 kg	40 - 100 lb	0.5 lb
	50 - 200 kg	0.5 kg	100 - 400 lb	1 lb
	200 - 500 kg	1 kg	400 - 1000 lb	2 lb
	500 - 2000 kg	2 kg	1000 - 4000 lb	5 lb

Minimum Capacity: 20kg (The 0-20kg range is available but is not part of the EMC specification).

### Scale 2:

Vet Scale	0 - 100 kg	0.05 kg	0 - 200 lb	0.1 lb
	100 - 300 kg	0.1 kg	200 - 600 lb	0.2 lb

### Scale 3:

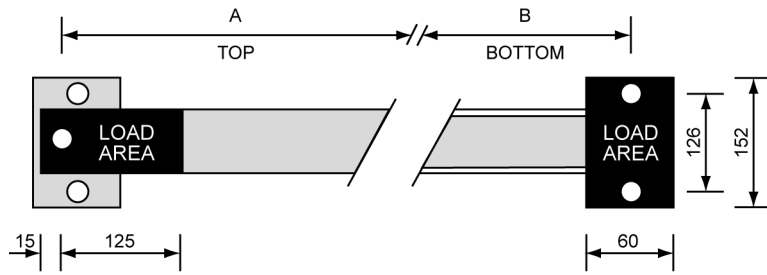
Heavy-Duty Loadbars	0 - 100 kg	0.5 kg	0 - 200 lb	1 lb
	100 - 200 kg	1 kg	200 - 400 lb	2 lb
	200 - 1000 kg	2 kg	400 - 2000 lb	5 lb
	1000 - 3500 kg	5 kg	2000 - 7000 lb	10 lb

**Accuracy:** ± 0.5% of Displayed Reading ± 1 Division (where 1 division is 0.1kg, 0.5kg etc. depending on weight range)

**RF Immunity:** Maximum additional error in a 3V/m RF field in the range 27 - 500 MHz is:  
± 2 divisions for 20 - 50kg  
± 1 division for 50 - 200kg  
± 0 division for 200 - 2000kg

**EMC Approvals:** Meets or exceeds the following standards:  
IEC801-2 Electrostatic discharge  
EM50081-1 Free radiation measurements  
EM50082-1 RF immunity

## STEEL LOADBAR SET 2000kg



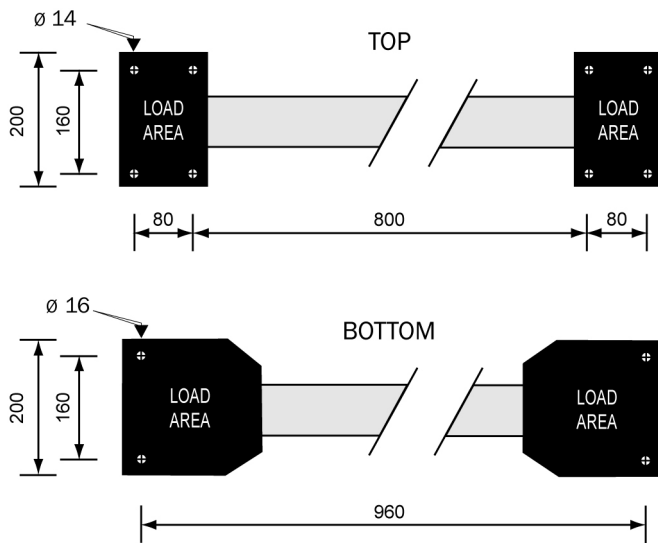
**600mm**

A: 570  
 B: 546  
 Length: 600  
 Width: 152  
 Height: 95  
 Capacity: 2000kg

**1000mm**

A: 970  
 B: 946  
 Length: 1000  
 Width: 152  
 Height: 95  
 Capacity: 2000kg

## HEAVY DUTY LOADBAR SET 3500kg



Length: 1000      Width: 200      Height: 115  
 Capacity: 3500kg



23 Matipo Street, Palmerston North, New Zealand  
[www.iconix.co.nz](http://www.iconix.co.nz)

Ph 64-6-3501528